

Edible Plants Garden

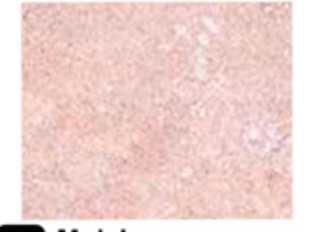


DRIVEWAY

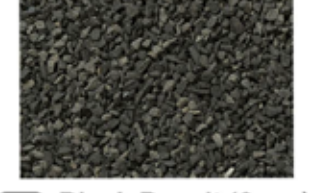
SIDEWALK



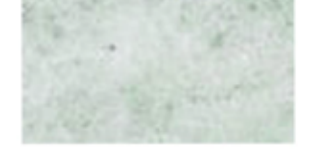
1 Planter Gravel
You'll need 36 ft³ of 1



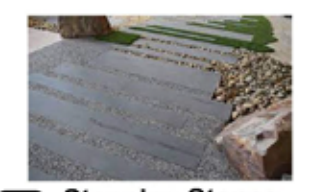
2 Mulch
You'll need 40 ft³ of 2



3 Black Basalt (6mm)
You'll need 30 ft³ of 3



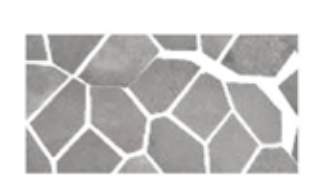
4 Creeping Black Sage
You'll need 303 ft² of 4



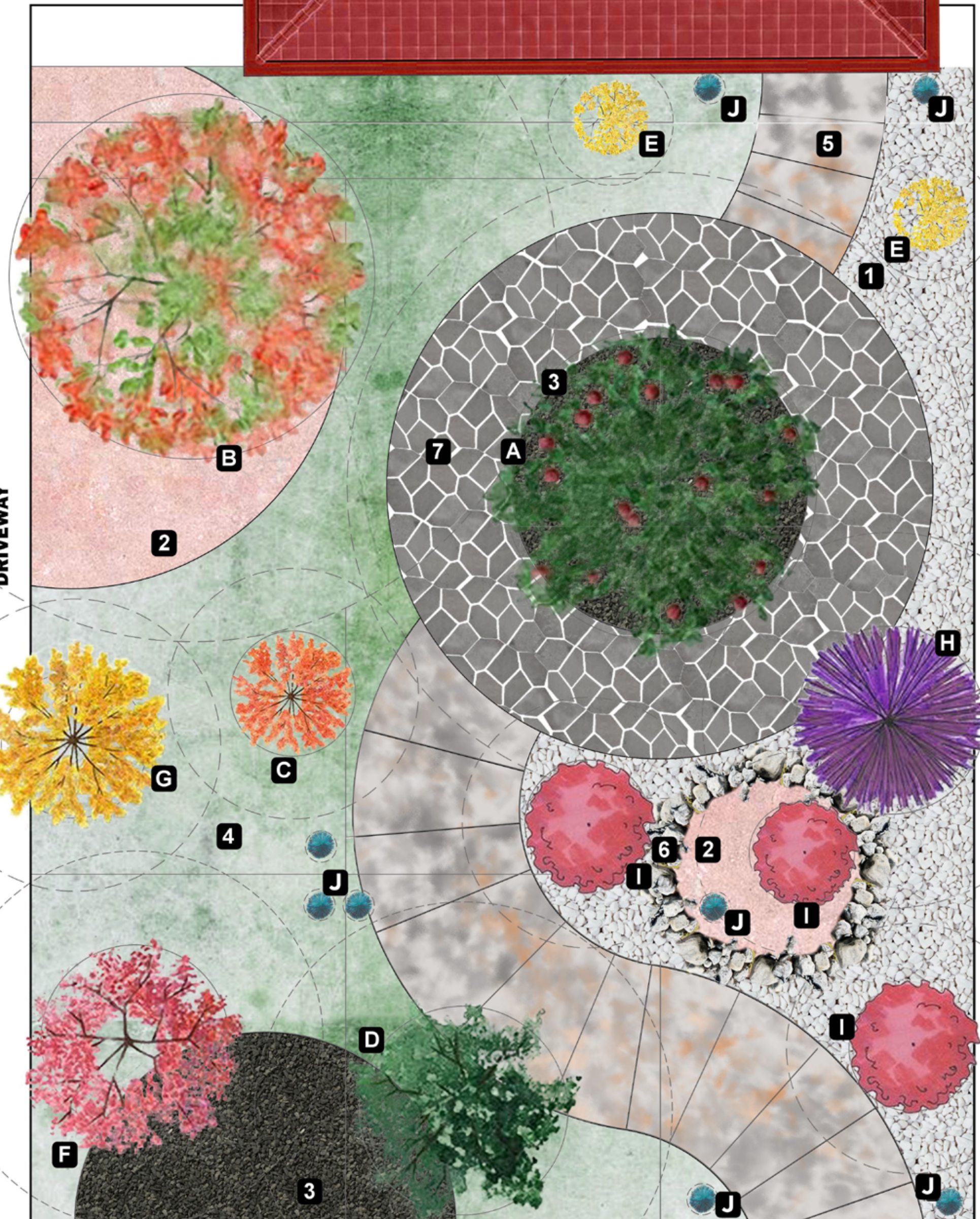
5 Stepping Stones
You'll need 139 ft² of 5



6 Berms
You'll need 9 ft³ of 6



7 Natural Flagstone Charcoal
You'll need 154 ft² of 7



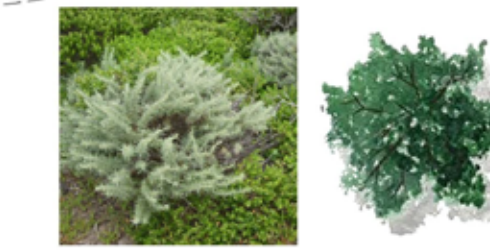
A You'll need 1 of A
Hollyleaf Cherry
(*Prunus ilicifolia* ssp. *ilicifolia*)
Sun: Full Sun, Part Shade
Water: Extremely Low, Very Low
Growth Rate: Moderate
Height: 5' - 40'
Width: 5' - 20'
Flower Color: Cream, White, Purple
Caution: Toxic Seeds



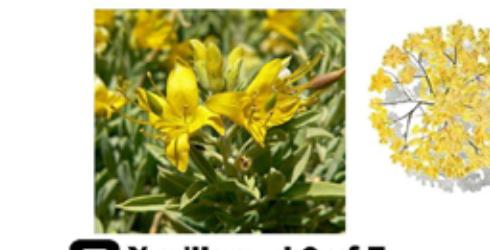
B You'll need 1 of B
Lemonade Berry
(*Rhus integrifolia*)
Sun: Full Sun, Part Shade
Water: Extremely Low, Very Low
Growth Rate: Fast, Moderate
Height: 3' - 20'
Width: 3' - 20'
Flower Color: Pink, White



C You'll need 1 of C
Summer Holly
(*Comarostaphylis diversifolia*)
Sun: Part Shade
Water: Very Low, Low
Growth Rate: Slow
Height: 10' - 20'
Width: 3' - 15'
Flower Color: Cream, Pink, White



D You'll need 1 of D
California Sagebrush
(*Artemisia californica*)
Sun: Full Sun
Water: Extremely Low, Very Low
Growth Rate: Fast
Height: 1' - 8'
Width: 4'
Flower Color: Cream, White, Yellow



E You'll need 2 of E
Bladderpod
(*Peritoma arborea*)
Sun: Full Sun
Water: Very Low, Low
Growth Rate: Fast
Height: 1.6' - 6.6'
Width: 2' - 6'
Flower Color: Yellow



F You'll need 1 of F
Pacific Pea
(*Lathyrus vestitus*)
Sun: Full Sun, Part Shade
Water: Very Low, Low
Growth Rate: Moderate
Height: 3' - 8'
Width: 2' - 3'
Flower Color: Pink, White



G You'll need 1 of G
Tall Oregon Grape
(*Berberis aquifolium*)
Sun: Full Sun, Part Shade, Full Shade
Water: Low
Growth Rate: Moderate
Height: 3.5' - 7'
Width: 6'
Flower Color: Yellow



H You'll need 1 of H
Purple Sage
(*Salvia leucophylla*)
Sun: Full Sun
Water: Extremely Low, Very Low
Growth Rate: Fast
Height: 2' - 5'
Width: 3' - 10'
Flower Color: Purple, Lavender, Pink



I You'll need 3 of I
Red Creeping Thyme
(*Thymus coccineus* Group)
Sun: Full Sun
Water: Low
Growth Rate: Low
Height: 2" - 3"
Width: 10" - 1'
Flower Color: Pink



J You'll need 8 of J
Tuscan Blue Rosemary
(*Rosmarinus officinalis* 'Tuscan Blue')
Sun: Full Sun
Water: Low
Growth Rate: Moderate
Height: 5' - 6'
Width: 2' - 4'
Flower Color: Blue, Lavender