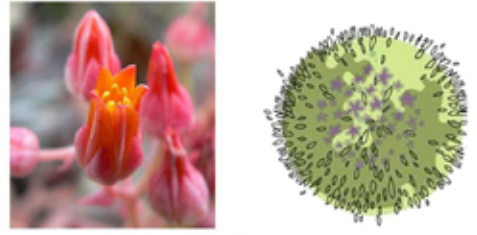


Burbank Garden



A You'll need 2 of A
Margarita Bop Penstemon
(Penstemon heterophyllus 'Margarita BOP')
 Sun: Full Sun, Part Shade
 Water: Moderate, Low
 Growth Rate: Slow
 Height: 1' - 2'
 Width: 2' - 3'
 Flower Color: Purple, Blue



B You'll need 2 of B
Canyon Dudleya
(Dudleya Cymosa)
 Sun: Part Shade, Full Sun
 Water: Very Low
 Growth Rate: Fast
 Height: 3.6" - 6"
 Width: 4" - 6"
 Flower Color: Orange, Red, Yellow, Brown



C You'll need 1 of C
Pygmy Date Palm
(Phoenix Roebelenii)
 Sun: Full Sun, Part Shade
 Water: Low, Medium
 Growth: Moderate
 Height: 6'-10'
 Width: 6' - 8'
 Flower Color: n/a



D You'll need 2 of D
Eastwood Manzanita
(Arctostaphylos Glandulosa ssp. Glandulosa)
 Sun: Full Sun, Part Shade, Full Shade
 Water: Very Low
 Growth Rate: Moderate, Slow
 Height: 3' - 10'
 Width: 3' - 10'
 Flower Color: Pink, White



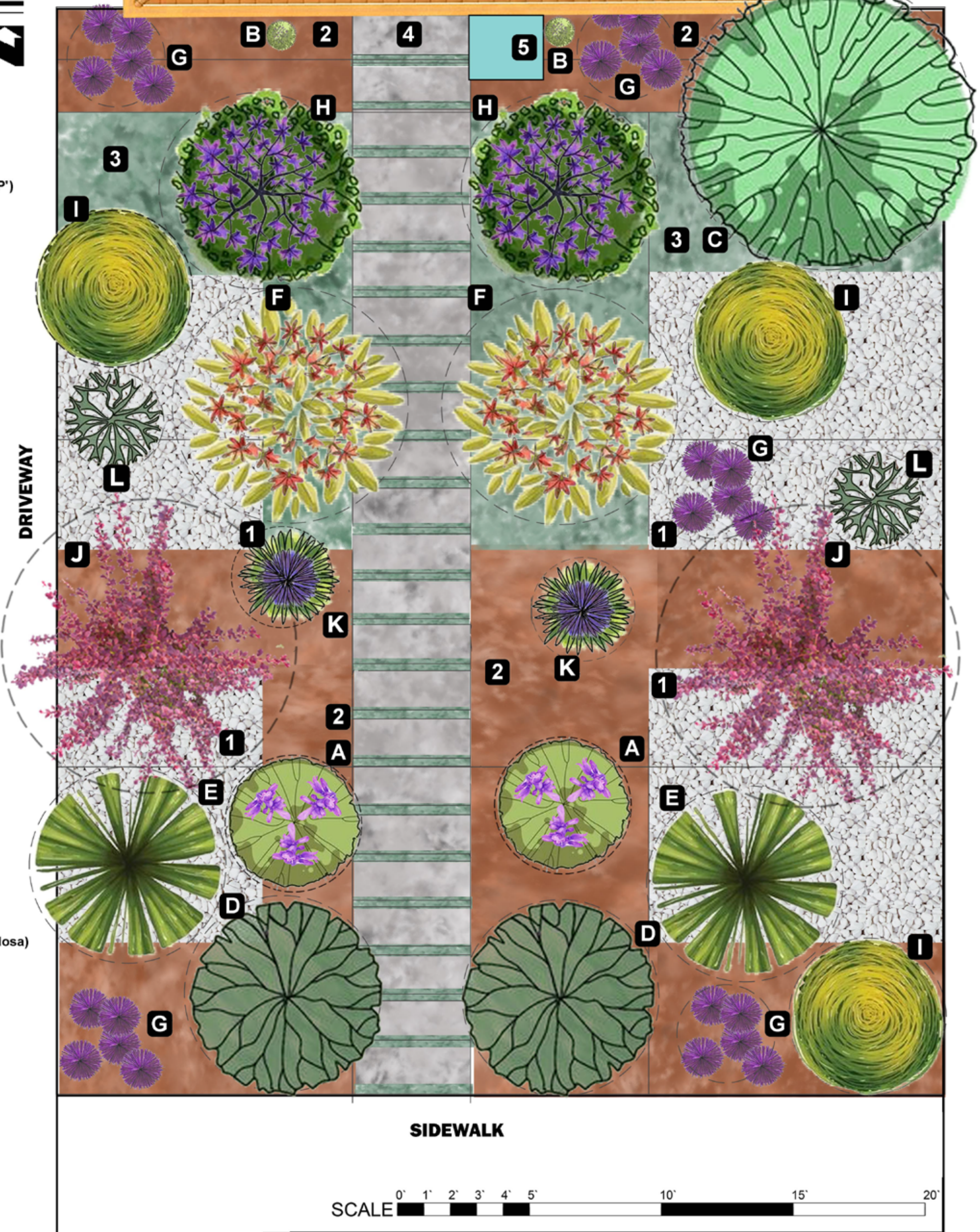
E You'll need 2 of E
Common Rush
(Juncus Patens)
 Sun: Full Sun
 Water: Moderate - High
 Growth Rate: Moderate
 Height: 1' - 3'
 Width: 3'
 Flower Color: Red, Brown



F You'll need 2 of F
Kangaroo Paw
(Anigozanthos flavidus)
 Sun: Full Sun
 Water: Low, Average
 Height: 1' - 6'
 Width: 1' - 4'
 Flower Color: Red, Gold/Yellow, Green, pink



G You'll need 5 of G
Spanish Butterfly Lavender
(Lavandula Stoechas Quasti)
 Sun: Full Sun
 Water: Very Low, Low
 Growth Rate: Moderate
 Height: 2' - 3'
 Width: 1' - 3'
 Flower Color: Purple



DRIVEWAY

SIDEWALK

SCALE 0' 1' 2' 3' 4' 5' 10' 15' 20'



H You'll need 2 of H
Blue-eyed Grass
(Sisyrinchium Bellum)
 Sun: Full Sun, Part Shade
 Water: Low
 Growth: Moderate
 Height: 1' - 2'
 Width: 3'
 Flower Color: Blue, Lavender, Purple



I You'll need 3 of I
Bush Sunflower
(Encelia Californica)
 Sun: Part Shade, Full Sun
 Water: Very Low
 Growth Rate: Fast
 Height: 1.6' - 5'
 Width: 3' - 7'
 Flower Color: Brown, Purple, Yellow



J You'll need 2 of J
Western Redbud
(Cercis occidentalis)
 Sun: Full Sun, Part Shade
 Water: Low
 Growth Rate: Moderate
 Height: 10' - 20'
 Width: 10' - 15'
 Flower Color: Pink, Yellow, Red



1 You'll need 73 ft³ of 1
Planter Gravel



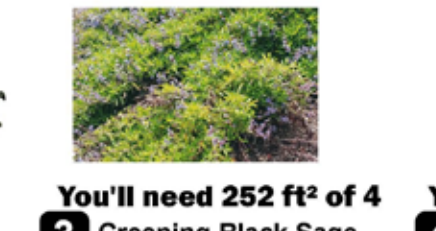
2 You'll need 46 ft³ of 2
Mulch



K You'll need 2 of K
Hummingbird Sage
(Salvia Spathacea)
 Sun: Full Shade, Full Sun, Part Shade
 Water: Very Low
 Growth Rate: Moderate
 Height: 1' - 3'
 Width: 3'
 Flower Color: Pink, Red



L You'll need 2 of L
Blue Chalksticks
(Senecio serpens)
 Sun: Full Sun, Partial Sun
 Water: Low
 Height: 10" - 1'
 Width: 2' - 3'
 Flower Color: White
 *Caution: It may be poisonous



3 You'll need 252 ft² of 3
Creeping Black Sage



4 You'll need 112 ft² of 4
Stepping Stones



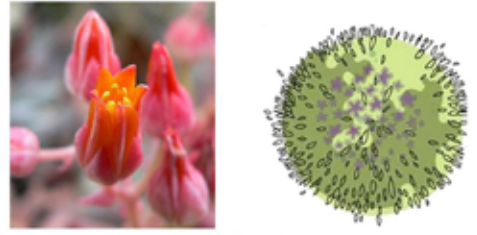
5 Rain barrels/Cisterns

Quantities may vary depending on your landscape. Please consult with your landscaper for your landscape projects needs

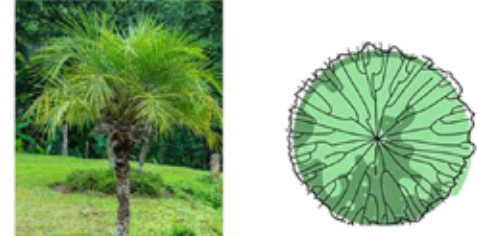
Burbank Garden



A You'll need 2 of A
Margarita Bop Penstemon
(Penstemon heterophyllus 'Margarita BOP')
 Sun: Full Sun, Part Shade
 Water: Moderate, Low
 Growth Rate: Slow
 Height: 1' - 2'
 Width: 2' - 3'
 Flower Color: Purple, Blue



B You'll need 2 of B
Canyon Dudleya
(Dudleya Cymosa)
 Sun: Part Shade, Full Sun
 Water: Very Low
 Growth Rate: Fast
 Height: 3.6" - 6"
 Width: 4" - 6"
 Flower Color: Orange, Red, Yellow, Brown



C You'll need 1 of C
Pygmy Date Palm
(Phoenix Roebelenii)
 Sun: Full Sun, Part Shade
 Water: Low, Medium
 Growth: Moderate
 Height: 6'-10'
 Width: 6' - 8'
 Flower Color: n/a



D You'll need 2 of D
Eastwood Manzanita
(Arctostaphylos Glandulosa ssp. Glandulosa)
 Sun: Full Sun, Part Shade, Full Shade
 Water: Very Low
 Growth Rate: Moderate, Slow
 Height: 3' - 10'
 Width: 3' - 10'
 Flower Color: Pink, White



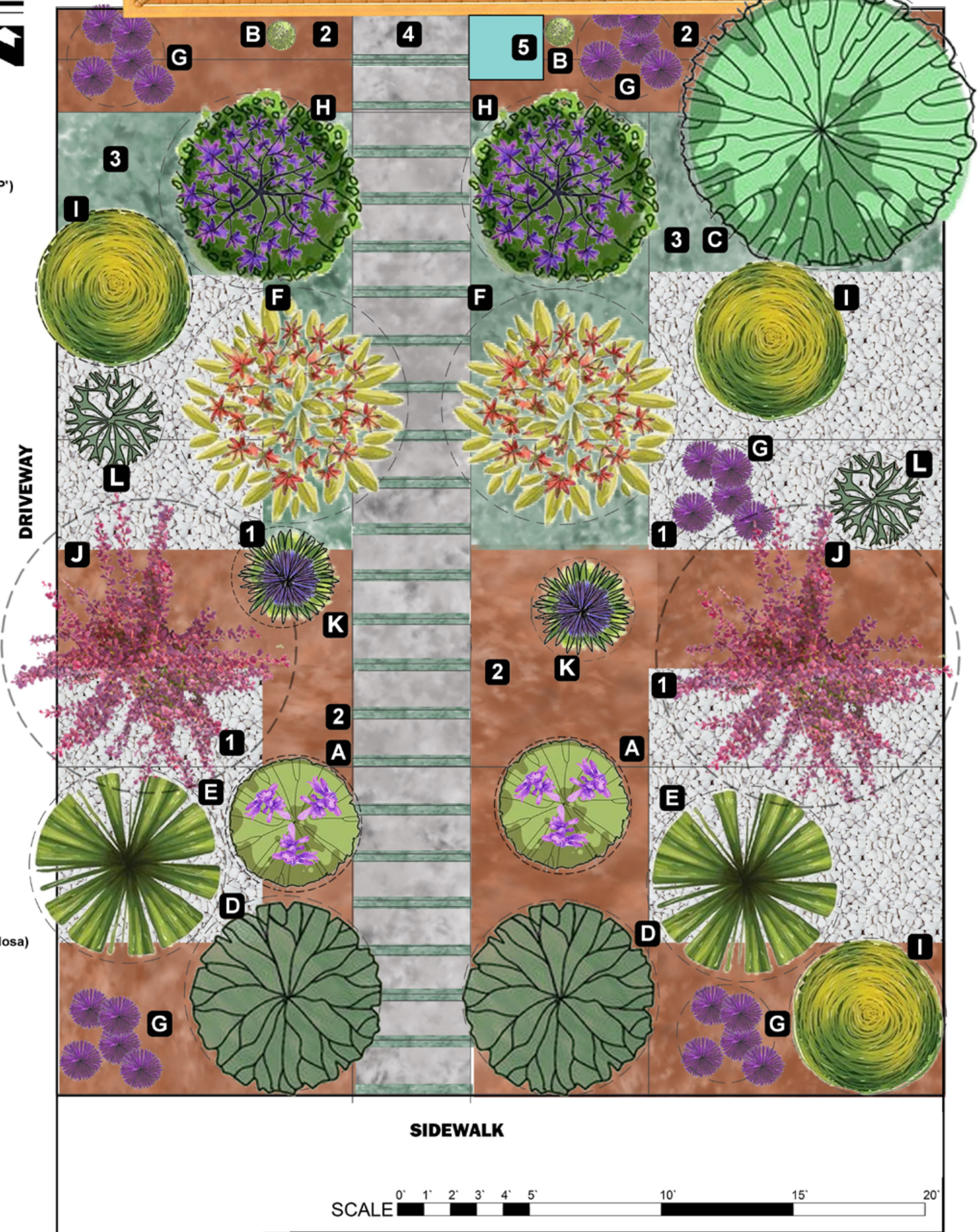
E You'll need 2 of E
Common Rush
(Juncus Patens)
 Sun: Full Sun
 Water: Moderate - High
 Growth Rate: Moderate
 Height: 1' - 3'
 Width: 3'
 Flower Color: Red, Brown



F You'll need 2 of F
Kangaroo Paw
(Anigozanthos flavidus)
 Sun: Full Sun
 Water: Low, Average
 Height: 1' - 6'
 Width: 1' - 4'
 Flower Color: Red, Gold/Yellow, Green, pink



G You'll need 5 of G
Spanish Butterfly Lavender
(Lavandula Stoechas Quasti)
 Sun: Full Sun
 Water: Very Low, Low
 Growth Rate: Moderate
 Height: 2' - 3'
 Width: 1' - 3'
 Flower Color: Purple



DRIVEWAY

SIDEWALK

SCALE 0' 1' 2' 3' 4' 5' 10' 15' 20'



H You'll need 2 of H
Blue-eyed Grass
(Sisyrinchium Bellum)
 Sun: Full Sun, Part Shade
 Water: Low
 Growth: Moderate
 Height: 1' - 2'
 Width: 3'
 Flower Color: Blue, Lavender, Purple



I You'll need 3 of I
Bush Sunflower
(Encelia Californica)
 Sun: Part Shade, Full Sun
 Water: Very Low
 Growth Rate: Fast
 Height: 1.6' - 5'
 Width: 3' - 7'
 Flower Color: Brown, Purple, Yellow



J You'll need 2 of J
Western Redbud
(Cercis occidentalis)
 Sun: Full Sun, Part Shade
 Water: Low
 Growth Rate: Moderate
 Height: 10' - 20'
 Width: 10' - 15'
 Flower Color: Pink, Yellow, Red



1 You'll need 73 ft³ of 1
Planter Gravel



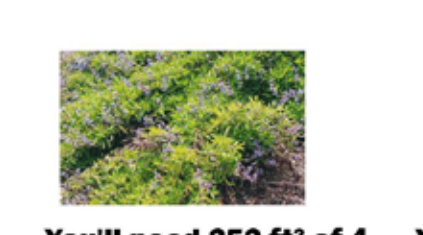
2 You'll need 46 ft³ of 2
Mulch



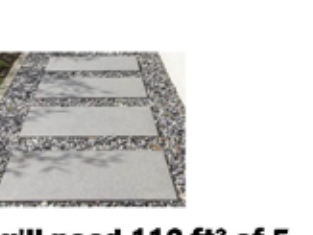
K You'll need 2 of K
Hummingbird Sage
(Salvia Spathacea)
 Sun: Full Shade, Full Sun, Part Shade
 Water: Very Low
 Growth Rate: Moderate
 Height: 1' - 3'
 Width: 3'
 Flower Color: Pink, Red



L You'll need 2 of L
Blue Chalksticks
(Senecio serpens)
 Sun: Full Sun, Partial Sun
 Water: Low
 Height: 10" - 1'
 Width: 2' - 3'
 Flower Color: White
 *Caution: It may be poisonous



3 You'll need 252 ft² of 3
Creeping Black Sage



4 You'll need 112 ft² of 4
Stepping Stones



5 Rain barrels/Cisterns