

# Currents



*Always There for You!*



## Worst Drought in 1,200 Years

December brought California some much-needed rain and snow. However, while the rains have been generous, they are far from enough to put a big dent in the drought. And, while the annual snow survey of December 30 found more snow than last year, the snow pack was still just 33% of average. In fact, the rains came just as news was breaking that the current drought is, indeed, historic. Scientists measuring tree rings revealed that California is suffering its worst drought in over 1,200 years.

Wow.

The \$64,000 question is 'When will the drought be over?' According to Art Hinojosa, Chief of Hydrology at California's Department of Water Resources, the December rains were a good beginning, "But we need storm after storm after storm if we have any hope of getting out of the drought this year." Mr. Hinojosa is right: a punishing three-year drought cannot be erased in a few days. With foresight and leadership, Southern California has built water storage facilities. We're living off that stored water now, but levels are running low.

Please, continue to do your part to use water wisely. We just don't have any to spare.

**Pictured: Lake Oroville, the State Water Project's principal reservoir located in Butte County.  
Image courtesy California Department of Water Resources.**

# DROUGHT REQUIREMENTS

**Water is in short supply – Don't waste it! Please follow all City of Burbank requirements:**



**Through the end of March, water your lawn and plants only on Saturdays.**



**Water no more than 15 minutes per irrigation station. (Drip irrigation and low-flow sprinkler heads are exempt from this requirement.)**



**Never water when the sun is out!**



**Adjust your sprinklers to eliminate any overspray. Repair indoor and outdoor leaks ASAP.**



**Turn off your sprinklers if it's rainy.**



**Prevent water runoff! Stop irrigating if water is running off your lawn. Cycle & Soak is a good irrigation method — split your irrigation time in half or thirds and let the water soak down to the roots between cycles.**



**Use a hose with a shut-off nozzle when washing your car. Or, follow the City's lead and go "Dirty for the Drought!"**

## 25% Did you know?

A full 25% of all the precious drinking water used in Burbank goes to irrigate our lawns and landscapes! Luckily, during cooler weather water stays in the ground longer, meaning your lawn and plants don't need to drink as much. Watering just on Saturdays should be plenty to keep our yards healthy without wasting water. If your plants need a little extra sip, you can always water by hand.

Thank you, Burbank, for reducing use by almost 10% since we moved to one day per week watering. Together, we will weather this drought!

GO  
*Dirty*  
FOR THE DROUGHT

#DIRTYCARPLEDGE

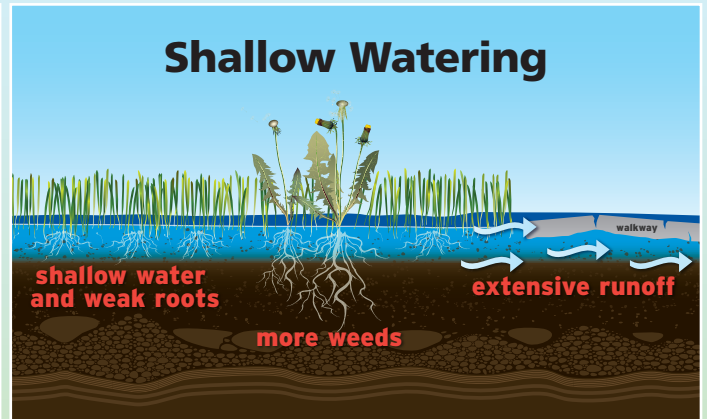
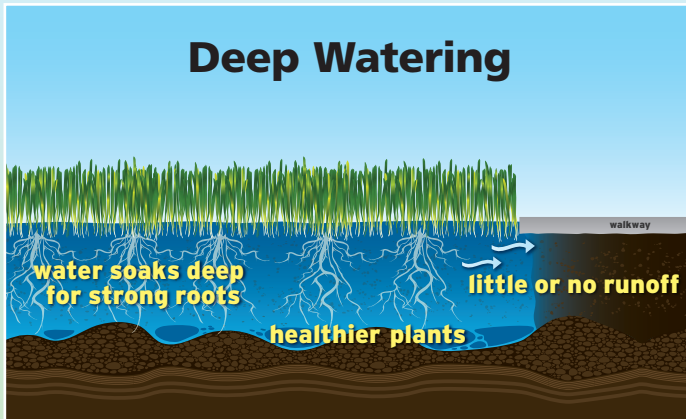


The City of Burbank has gone Dirty for the Drought! Windshields will be kept clean, but we will forego washing fleet vehicles. You can also take the #DirtyCarPledge by visiting the Los Angeles Waterkeeper website. Sign up and receive a sticker for your car.

[lawaterkeeper.org](http://lawaterkeeper.org)

# Train Your Roots!

Infrequent but deep watering trains lawn roots to grow deeper into the soil, where it's cool and moist. Deep roots allow your lawn to tolerate longer periods without water and still thrive. By contrast, frequent and shallow watering teaches roots to hover around the soil surface for the next drink. Shallow-rooted lawns don't survive dry spells.



Here are some handy landscape tips on how to train your lawn to be as hearty as possible.

- ✓ **Your goal is to apply about ½ inch of water** to your lawn when you irrigate.
- ✓ **Allow water to soak into the ground.** If you see runoff, use the Cycle & Soak method: break up your irrigation time into two or three cycles, letting the water completely soak between cycles.
- ✓ **Aerate your lawn to better absorb every drop of water.** Use a mechanical aerator to core small, deep holes in your lawn that allow water to percolate and ensure that nutrients reach the soil beneath your grass.
- ✓ **Set your lawn mower on the high side.** Taller blades shade the soil and help retain moisture.
- ✓ **Use mulch to help retain moisture,** suppress weeds, and improve soil quality by adding nutrient-releasing organic matter. Don't place the mulch against your plants and trees; leave four to six inches for the plant to breathe.

## Did You Know?

Feel free to shovel up all the free mulch you want, courtesy of Burbank's Park, Recreation and Community Services Department. The high-quality mulch is available in the parking lots of McCambridge, Izay and Gross Parks, anytime that the parks are open.





# Drought-Proofed!

This site is irrigated with  
Recycled Water to protect  
Burbank's drinking water supply.

# Local Heroes!



The City's Park, Recreation and Community Services department has done a fantastic job of leading by example! Virtually every park is irrigated with recycled water. What's so special about that, you might ask. Well, recycled water is 100% conservation. Using recycled water where we can — to irrigate with and use in building cooling towers — means an equal amount of drinking water is saved. In a time of drought, when drinking water is in short supply, Burbank's parks are offsetting over 100 million gallons of drinking water, year after year!

You may have seen the purple "Drought-Proofed!" signs dotting our parks and other City locations served with recycled water. The signs showcase sites that are protecting Burbank's water supply. These sites are exempt from watering restrictions in place for precious drinking water resources. If you see a park or the Chandler Bikeway being irrigated on a day when you are not allowed to water your lawn, the reason is recycled water is being used.

Using recycled  
water for  
irrigation at our  
parks offsets

**100**  
**million**  
**gallons of**  
**drinking**  
**water each**  
**year!**



**Did you know?** Recycled water has greater salt content which means a longer run time is needed to push the salt below the root zone. Recycled water comes from Burbank's Wastewater Treatment Facility and is approved for all uses except drinking. Burbank has a durable supply of recycled water. The more that this water is used, the better as it helps recharge our local aquifer.

# Saving Water Can Be a Beautiful Thing



*The Hughes Family:  
Jennifer, Lilli, Phoebe and Robert Hughes*

## Just ask the Hughes Family!

Burbank residents receive rebates for replacing thirsty turf with drought-tolerant plants or artificial turf. BWP created the Go Native! program to support residents like Jennifer Hughes, who offers this testimonial:

*Go Native is such a great program! In addition to a financial incentive to help with our turf replacement project, it gave us a deadline and time frame in which to work. We had been “talking” about tearing our lawn out and doing “something” for years, but with no concrete plan. Contacting BWP got the ball rolling and I couldn’t be more thrilled with the outcome. We have met so many of our fellow Burbankians because they stop to admire the yard and we start chatting. Saving water, beautifying your home and meeting fellow humans. What could be better than that? Thank you Burbank, for offering the Go Native program!*

Quite the contrary – Thank YOU, Jennifer, for taking steps that help all of Burbank weather the drought!

If your family is interested in drought-proofing your landscape, please visit [BurbankWaterAndPower.com](http://BurbankWaterAndPower.com). You’ll find Go Native! information and get “Water-Wise Gardening” landscaping ideas.



You can also sign up for BWP’s free workshops:

**Turf Replacement** – Learn about removing turf, plant options, increasing landscape permeability, and basic landscape maintenance.

**Become a Watershed Wise Gardener** – Learn how to utilize water more wisely through drainage, rainwater harvesting, and water supply protection.

**Water Saving Landscape Maintenance** – Best practices for irrigating and fertilizing to make your garden more drought resistant.



*The Hughes Family designed an English garden with permeable paths and plants that sip water, including California native shrubs, succulents and decorative grasses. The garden uses water-saving drip irrigation and bubblers.*

# The Clock is Ticking on DOUBLE Rebates!

## Have you received *your* bonus rebate yet??

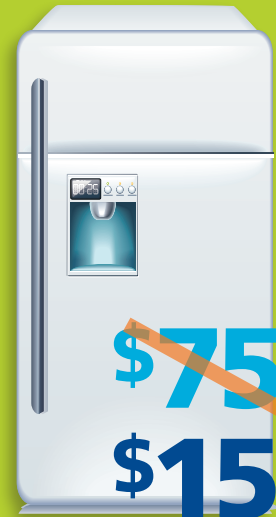
Just the rest of January and February remain for BWP's Double Rebates for Appliances promotion. If you have put off replacing an old, inefficient refrigerator, clothes washer, dishwasher, air conditioning system or other household appliance, now's the time to make your purchase. Buy high-efficiency appliances and we will double your Home Rewards rebate. For more information, visit BWP online at [BurbankWaterAndPower.com](http://BurbankWaterAndPower.com).



~~\$35~~  
**\$70**



~~\$50~~  
**\$100**



~~\$75~~  
**\$150**

**Full List of DOUBLE Rebates at [BurbankWaterAndPower.com](http://BurbankWaterAndPower.com)**



## Thank You, Burbank, For Your Generosity!

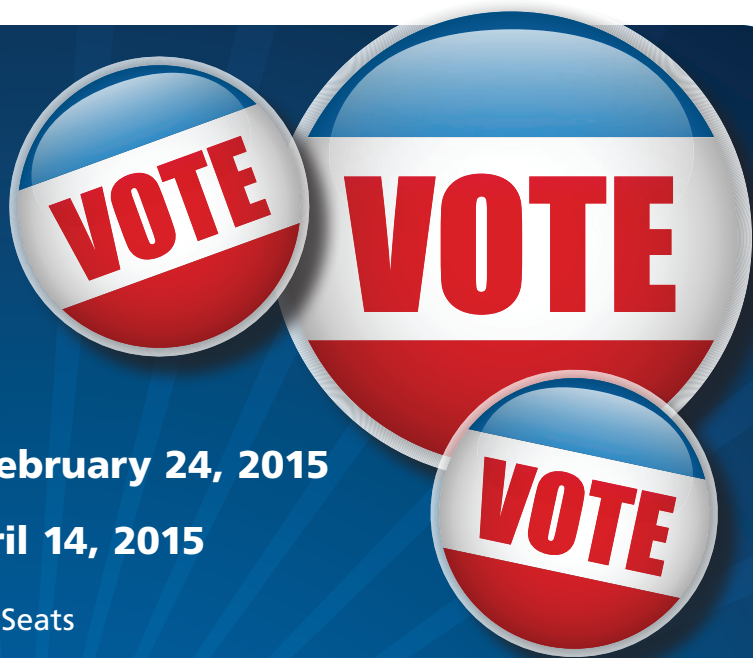
Project Share is a community funded program that helps keep the lights on for Burbank residents in need. The program provides up to \$100 in payment assistance annually for income qualified residents that find themselves unable to pay their bill. Partnering with the Burbank Temporary Aid Center, BWP works to get assistance provided as quickly as possible.

Last year, 265 Burbank households received \$23,130 in Project Share assistance. To each of you who extended a hand, a very gracious and heartfelt thank you! For those of you who would like to assist neighbors in need, here are the three ways you can make a tax-deductible donation to Project Share:

- 1. Recurring Donation:** Let us know the fixed amount you'd like added to your BWP bill each month.
- 2. Round Up!:** We'll round up your monthly bill to the nearest dollar with those contributions going directly to Project Share.
- 3. Single Donation:** Add a donation when submitting any payment. Just mark on your payment stub that the contribution is for Project Share.

No amount is too small and your generosity is always appreciated. Neighborhood angels can download the donation form at [BurbankWaterAndPower.com/Project-Share](http://BurbankWaterAndPower.com/Project-Share).

# Burbank Municipal Elections



**Primary Nominating Election – February 24, 2015**

**General Municipal Election – April 14, 2015**

2 City Council Seats / 3 Board of Education Seats

## **Ballot Drop Off Locations (8):**

- City Clerk's Office\* – 275 E. Olive Ave.
- Buena Vista Library\* – 300 N. Buena Vista St.
- Joslyn Adult Center\* – 1301 W. Olive Ave.
- Tuttle Senior Center\* – 1731 N. Ontario St.
- McCambridge Park\* – 1515 N. Glenoaks Blvd.
- Burbank Adult School\* – 3811 Allan Ave.
- John Muir Middle School – 1111 N. Kenneth Rd.
- Edison Elementary School – 2110 Chestnut St.

\* Denotes Saturday Voting Drop-Off Locations

Vote and return your prepaid postage ballot by mail OR in person to the City Clerk's Office Monday through Friday between the hours of 8:00 a.m. and 5:00 p.m. **POSTMARKS DO NOT COUNT!** All ballots must be received by 7:00 p.m. on Election Day.

---

## **Elecciones Municipales de Burbank**

**Elección Primaria Nominativa – 24 de febrero de 2015**

**Elección General Municipal – 14 de abril de 2015**

2 puestos en El Consejo Municipal / 3 puestos en La Junta Escolar

## **Centros Oficiales de Recolección (8):**

- Oficina de la Secretaria Municipal – 275 E. Olive Ave.
- Buena Vista Library\* – 300 N. Buena Vista St.
- Joslyn Adult Center\* – 1301 W. Olive Ave.
- Tuttle Senior Center\* – 1731 N. Ontario St.
- McCambridge Park\* – 1515 N. Glenoaks Blvd.
- Burbank Adult School\* – 3811 Allan Ave.
- John Muir Middle School\* – 1111 N. Kenneth Rd.
- Edison Elementary School – 2110 Chestnut St.

\* Denota Centros Oficiales de Recolección de votación día Sabado

Vote y devuelva su boleta electoral con postal prepagado por correo O en persona a la Oficina de la Secretaria Municipal, Lunes a Viernes entre las horas de 8:00 am hasta las 5:00 pm. **MATASELLOS NO CUENTAN!** Toda boleta electoral debe ser recibida antes de las 7:00 p.m. el día de Elección.

# Where Does Burbank's Power Come From?

BWP generates electricity here in Burbank and procures energy from a variety of technologies and fuels from across the western U.S. A varied portfolio means energy reliability Burbank can count on! In this ongoing series, we look at how Burbank is powered.

---

## PEBBLE SPRINGS WIND PROJECT

The Pebble Springs wind project is located in Oregon and is comprised of 47 large wind turbines. Together, these turbines produce nearly 100 megawatts, about one-third the energy Burbank needs on a hot summer day. Under an 18-year power purchase contract, BWP purchases 10 megawatts of the project's capacity and energy. The Los Angeles Department of Water and Power and Glendale Water and Power purchase the balance.

Wind turbines generate electricity when Mother Nature uses wind to turn turbine blades, which then turns the electrical generator. Wind energy is renewable and creates no greenhouse gases, which is great. But, wind is also unpredictable, making wind energy (like solar energy) an "intermittent" resource.

In order to remove the unpredictability of this intermittent power resource, BWP participates in an energy exchange agreement with a power marketer to make the power "firm." The marketer takes BWP's share of Pebble Springs' output as it is generated, absorbs its intermittency, and delivers an equivalent amount to BWP on a predictable (or "firm") schedule. This arrangement, which is not unusual for intermittent generators like Pebble Springs, means Burbank residents and businesses can count on power when they need it.

Nearly 33% of the energy that powers Burbank comes from renewable energy resources. The Pebble Springs Wind Project is an important part of BWP's energy portfolio, helping us reach this important environmental milestone.







# Another ONEBurbank Success Story!



**ONEBurbank** is a suite of BWP fiber optic services offered to Burbank businesses looking for exceptionally fast and reliable bandwidth. Visit **ONEBurbank** at **BurbankWaterAndPower.com/Fiber-Optics/One-Burbank-services**.

TechMD, Inc., founded in 2002 and located in Burbank since 2012, is a quality-minded audio and video design consultancy for some of the best names in the entertainment industry, including Walt Disney Imagineering, BRC Imagination Arts and The Hettema Group. President and Principal Engineer, Dave Revel, leads a team of more than twenty highly skilled professionals in designing world-class audio, video, and control systems for theme parks, museums and other large volume entertainment venues. Mr. Revel shares TechMD's experience with BWP's ONEBurbank fiber service.

When our company first moved to Burbank, we utilized the two major internet service providers for the area – one for our primary service, and the other as a back-up provider in the event of an outage. To our dismay, we experienced frequent outages, and the back-up service simply did not work. To make the situation worse, we found that both companies provided unpleasant customer service. The service troubles we were experiencing compromised our ability to do business and to continue growing our company. We had to find a real solution.

Our Operations Manager, Amy La Force, spent weeks researching alternatives. The providers she found required exorbitant start-up costs and could not guarantee service.

Then one afternoon, Amy picked up a copy of Currents and read an article just like this one which happened to feature a photo of a woman with a dog that Amy recognized from the neighborhood. It turns out that the neighbor was a ONEBurbank customer! Amy explored how ONEBurbank's fiber offerings could work for TechMD, and we have been with ONEBurbank ever since.

The installation went smoothly and the service people were quick and pleasant. For a small business like ours, the cost is a bit pricier than for other services, but ONEBurbank's reliability is worth every penny to us. Since our switch to ONEBurbank a year and a half ago, we haven't had so much as a second of downtime!

**We welcome TechMD, Inc. as another satisfied ONEBurbank customer! Visit their website at [www.techmdinc.com](http://www.techmdinc.com) for more information.**

Photo: Dave Revel, President, speaking with TechMD colleagues at their Burbank headquarters.

# Tickled Pink!

BWP employees proudly wore pink during October's month-long campaign to raise funds for breast cancer research. BWP employees raised over \$2,500 during the "Get Your Pink On" Campaign. All donations will go to the Susan G. Komen for the Cure Fund.

Pictured (left to right): BWP employees Jason Edwards and Christopher Vilchis are all smiles in pink; More smiles from Christopher Lowe and James Rowland. Throughout October, all BWP field crews wore pink hard hats in support of our mothers, daughters, wives, sisters and friends.



## BWP Angels

Annually, BWP employees help to make the season brighter for those in need by participating in the Salvation Army's Angel Tree program. We adorn our lobby with a tree decorated with gift tags that list the holiday wish items of children from Burbank households struggling to make ends meet. We then fulfill those holiday dreams.

**The 300+ employees of BWP wish everyone in Burbank a safe, happy and healthy 2015!**

*Above: BWP Elves Jack Corbett and Rosemary Worthen with a vanload of Angel Tree gifts.*

## BWP Receives Grant for Curbside Charging

BWP has been awarded a \$164,000 grant from the California Energy Commission.

This grant will fund eight public electric vehicle charging stations. With help from UCLA's Luskin Center for Innovation, we're exploring promising curbside locations now. High on our list will be sites that provide charging opportunities for neighboring apartment buildings and nearby shopping and dining establishments.

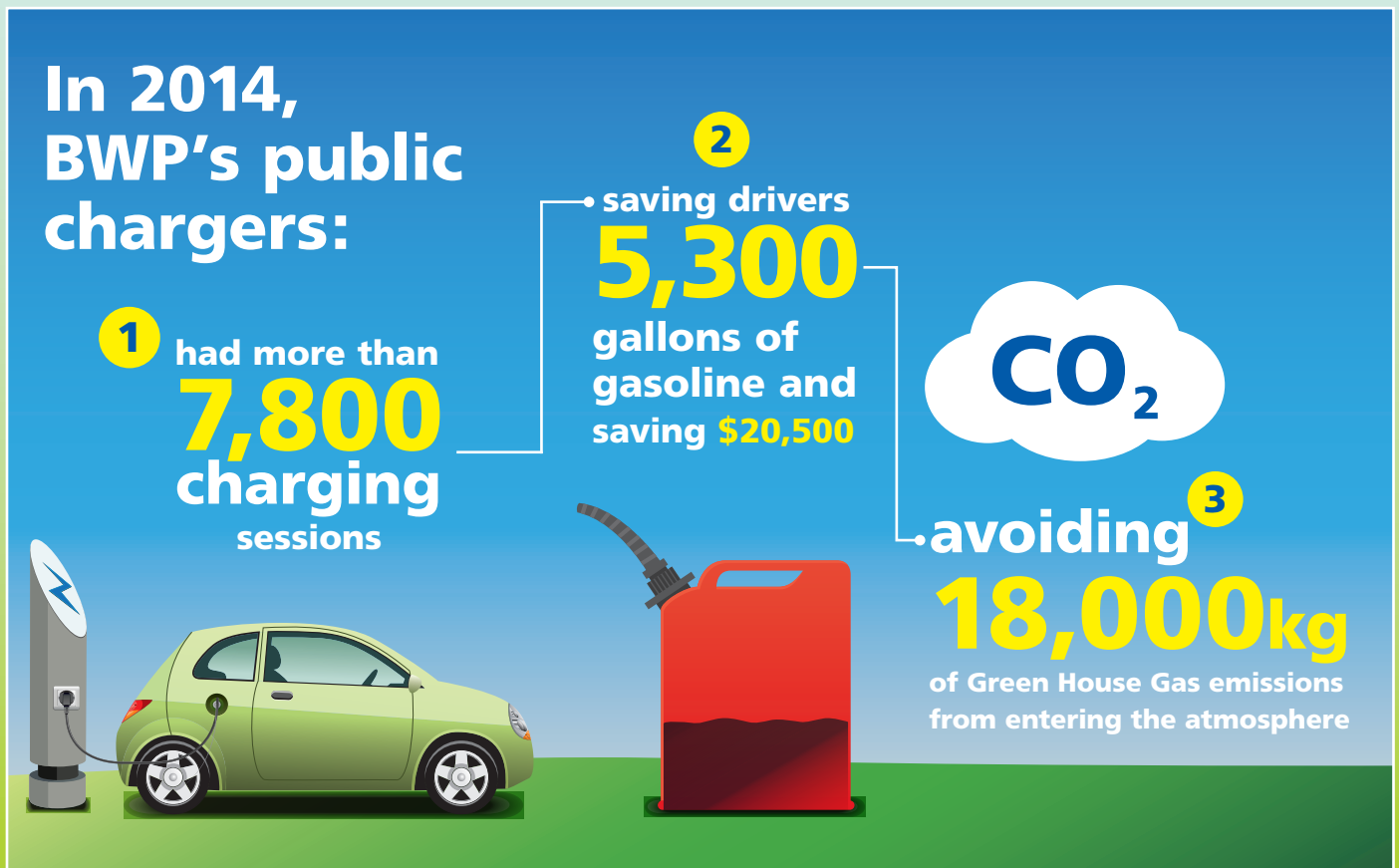
In 2011, BWP received a Department of Energy grant that helped fund 11 EV charging stations. For a map of current public charging stations located in Burbank, please visit [BurbankWaterAndPower.com/electric-vehicles](http://BurbankWaterAndPower.com/electric-vehicles).



# Charging Ahead!

Over the past year, sales of electric vehicles (EVs) have nearly doubled across the United States, approaching 300,000 plug-in vehicles on American highways. With over 100,000 of those EVs sold in California, our state leads the trend in a big way. In fact, California doesn't just lead the nation in EV sales, we have more than any other country!

One issue that EV drivers have to contend with is "range anxiety" – do they have enough battery charge to arrive at their destination? To ease this concern, BWP installed 11 public chargers in 2011. Drivers from across Southern California come to Burbank to charge their EVs. Here are some fun facts about those chargers:



## Still feeling range anxiety?

You'll be happy to know that BWP is working on adding more EV charging stations, including some DC Fast Chargers that take just minutes to refill your charge! For information on BWP's EV charger locations and rebate, please visit [BurbankWaterAndPower.com/electric-vehicles](http://BurbankWaterAndPower.com/electric-vehicles).

**Did you know?** 40% of harmful greenhouse gas emissions come from the transportation sector. Plug-in vehicles can help provide energy independence, economic growth and environmental sustainability.



*Always There for You!*

**Please  
use  
water  
and  
energy  
wisely.**

**Postal Customer**

PRSRSTSD  
U.S. Postage  
PAID  
Van Nuys, CA  
Permit No. 72

ECRWSS



**Follow BWP at [twitter.com/BurbankH2OPower](https://twitter.com/BurbankH2OPower)**

Scan the barcode with your smartphone to go directly to our Twitter page.

FSC LOGO

This BWP newsletter is printed on recycled paper that is Forest Stewardship Council (FSC) certified. The FSC Logo identifies products which contain wood from well managed forests certified in accordance with the rules of the Forest Stewardship Council.

## How to Contact Us.

Customer Service: (818) 238-3700

Water Services: (818) 238-3500

Electric Services: (818) 238-3575

Conservation Services: (818) 238-3730

Street Light Outages: (818) 238-3575

After-hours Emergency: (818) 238-3778

ONEBurbank: (818) 238-3113

Currents Editor: Jeanette Meyer,  
[jmeyer@burbankca.gov](mailto:jmeyer@burbankca.gov)

Visit us online at:  
[BurbankWaterAndPower.com](http://BurbankWaterAndPower.com)

***Always There For You!***

## In this issue...

**Drought Requirements**

***Go Dirty for the Drought***

**Train Your Roots!**

***Saving Water Can Be a Beautiful Thing –  
A Go Native! Success Story***

**The Clock is Ticking on DOUBLE Rebates**

***Thank You, Burbank, For Your Generosity!***

**Burbank Municipal Elections**

***Where Does Burbank's Power Come From?***

**TechMD, Inc. and ONEBurbank**

***BWP Employees Making a Difference  
for Burbank***

**Charging Ahead – EV Chargers in Burbank**