

How to Check Your Toilets Flush Volume



FLUSH VOLUME refers to how much water is released when a toilet is flushed. Since January 1994 all toilets sold in California must use 1.6 gallons per flush (gpf) or less. Older toilets use up to seven gallons per flush!

HERE ARE TWO WAYS TO FIND THE FLUSH VOLUME OF A TANK-STYLE TOILET:

1 Look for a 1.6 gpf label or check the manufacturer's date stamp.

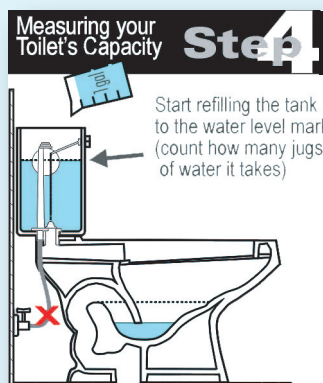
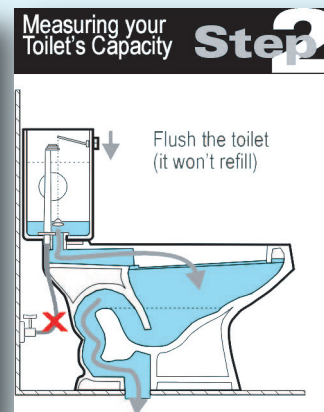
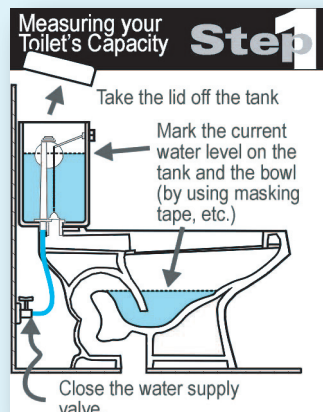
The manufacturer's name and a 1.6 gpf label often appear right behind the seat hinge on the bowl. If you don't see a 1.6 gpf label, lift the tank lid and check the inside back of the toilet tank for the manufacturer's date stamp - it is usually stamped directly into the porcelain. The chart at right will help you determine your toilet's flush volume.

Year Toilet was Manufactured	Gallons-per-Flush
pre-1982	5-7
1982-1990	3.5
1990-1994	1.6-3.5
1994-present	1.6

2 Measure the water used when your toilet flushes.

If you can't find a date on your toilet, or if the date is between 1990 and 1994 (when both 3.5 gpf and 1.6 gpf toilets were sold), you can measure the water used during a flush.
Note:

To use the following method you first need to shut off the water supply valve at the wall behind the toilet. If the valve is stiff and can't be turned off, try holding the float mechanism in the tank in the "up" position with a string or rubber band to keep the toilet from refilling while you are performing the following steps.



The total number of jugs from steps #4 and #5 equals the flush volume of your toilet. Remember to turn the water supply valve back on!

Special Note: If your toilet tank has a large black cylinder inside, rather than the standard flush mechanism, you have a 1.6 gpf pressure-assisted toilet.