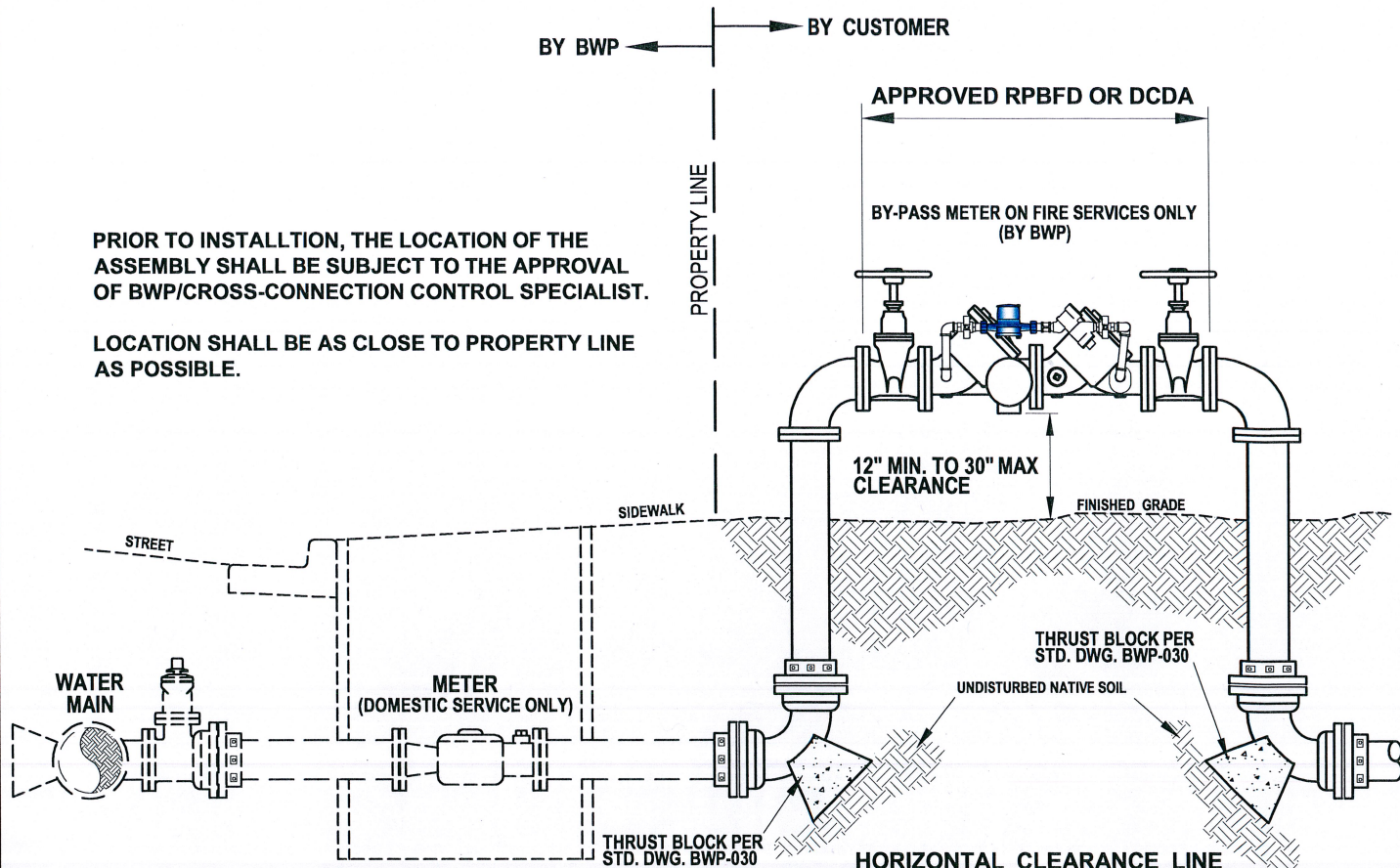


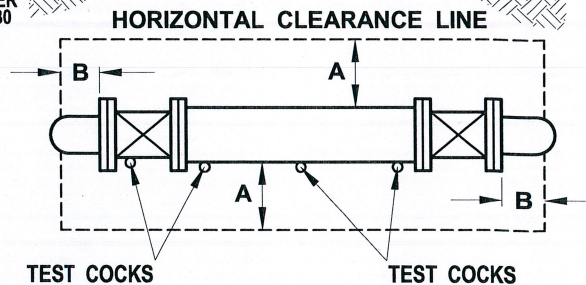
BY BWP ← → BY CUSTOMER

PRIOR TO INSTALLTION, THE LOCATION OF THE ASSEMBLY SHALL BE SUBJECT TO THE APPROVAL OF BWP/CROSS-CONNECTION CONTROL SPECIALIST.

LOCATION SHALL BE AS CLOSE TO PROPERTY LINE AS POSSIBLE.



MINIMUM CLEARANCE SCHEDULE		
SIZE	A	B
3/4" - 3"	12"	12"
4" & UP	18"	12"



SERVICE TYPE	BACKFLOW ASSEMBLY TYPE
DOMESTIC SERVICE	REDUCED PRESSURE BACKFLOW DEVICE (RPBFD)
FIRE SERVICE	DOUBLE CHECK DETECTOR ASSEMBLY (DCDA)

NOTES:

1. NEW DEVICES MUST BE INSPECTED AND TESTED IMMEDIATELY AFTER INSTALLATION. PLEASE CALL THE BWP/CROSS-CONNECTION CONTROL SPECIALIST FOR MORE INFORMATION (818) 238-3500
2. NO CONNECTIONS OR TEES ARE PERMITTED BETWEEN THE METER AND BACKFLOW PREVENTER POINT OF CONNECTION
3. THIS INSTALLATION IS TYPICAL; CLEARANCES SHALL APPLY TO ALL OTHER TYPES OF BACKFLOW PREVENTION DEVICES
4. BACKFLOW ASSEMBLIES SHALL BE SAME SIZE AS BUILDING SERVICE LINE
5. ALL ASSEMBLIES MUST BE LEAD FREE
6. THE BACKFLOW ASSEMBLY SHALL BE FROM THE LIST OF "APPROVED BACKFLOW PREVENTION ASSEMBLIES" BY THE CROSS-CONNECTION CONTROL FOUNDATION, UNIVERSITY OF SOUTHERN CALIFORNIA

ASSISTANT GENERAL MANAGER

Fred Lantz 4/24/89
DATE

C	REVISED NOTE 5				RPY	BN 1/27/16		CITY OF BURBANK WATER AND POWER	
B	ADDITIONAL NOTES				RPY	BN 3/3/11			
A	REVISED NOTES				RPY	WOM 4/24/02			
NO.	REVISIONS				BY	CHECK	APP'V'D	DATE	DRAWING NO. BWP-615
DRAWN	JJL	SCALE	N.T.S.	CHECK	RRJ	APP'V'D	CRB	DATE	
3-21-89									